

- If you have medical questions, your physician or clinical nurse specialist may be of help.
- The Share 24hr answering service has information on a support group and can provide an initial contact with a grief counselor.
- Private Counseling.

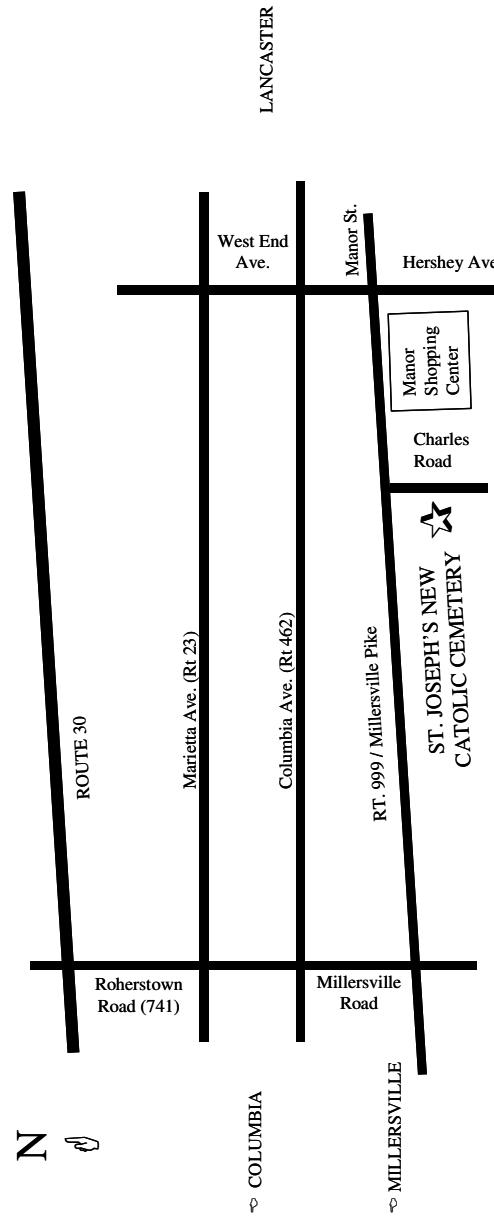
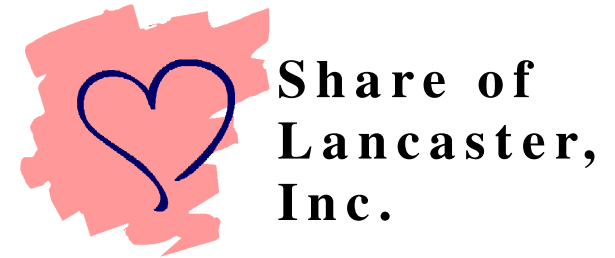
**Due to the nature of a common burial, please keep in mind the following pertaining to a Share burial:**

- A private viewing of your infant is not possible at the funeral home.
- Photos cannot be taken by or at the funeral home.
- All infants Share one or two caskets for burial.
- Burial sites are marked by number and not by individual infant names. However, a record of individual infant names is kept by the Charles F. Snyder Funeral Home and St. Joseph's Cemetery.



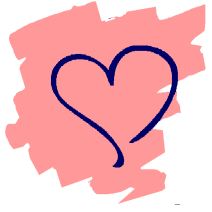
**Share of Lancaster, Inc.**  
 1576 Lititz Pike  
 Lancaster, PA 17601

Phone: 717-823-2789  
 Fax: 717-390-9952  
 Web Site: [www.Shareoflanaster.com](http://www.Shareoflanaster.com)



**WHAT IS A SHARE BURIAL?**





## Share Burials

### What is a Share burial?

The Share burial is a common burial of infants who have died through miscarriage, stillbirth, or early infant death for any reason. One or two small white caskets holding all of the infants are buried at a time. Because it is a common burial, disinterment (raising the casket out of the ground at a later time) is not possible. You may choose to have a meaningful photograph or remembrance note buried with your infant. Photographs and remembrance notes must be received at the Charles F. Snyder Funeral Home, 414 East King St., Lancaster, PA 17602 (write on the envelope — “Attention: Share”) by the Monday preceding the scheduled Tuesday burial. Flowers and mementos may be left at the graveside but are cleared periodically for cemetery caretaking.

The burial includes a graveside service which is lead by different local clergy who give their time to provide this service.

There is no cost to you for a Share burial.

If you choose to have a private burial, usually an affordable funeral can be arranged by local funeral homes.

### Where is the Share burial?

The burials are at St. Joseph's New Catholic Cemetery on Charles Road in Lancaster (near the Manor Shopping Center). You will find a map to the cemetery at the end of this pamphlet.

### When are the burials held?

Burials are held the **second** Tuesday of January, March, May, July, September, and November. The graveside service starts **promptly** at 2:30 pm on those days.

### Where will my baby be until the burial?

Your baby will be held at the hospital where you delivered until close to the burial date when he/she is picked up for burial by the funeral home.

### What if I miscarry at home?

Contact the Charles F. Snyder Funeral Home at (717) 393-9661 and they will help you arrange for a Share burial.

You should contact your doctor for any medical issues or concerns.



### How do I cope?

Miscarriage and still birth bring a special sadness to parents. Grieving for a baby lost through miscarriage or still birth is natural and sometimes the grief is misunderstood by others. If a baby is lost early in pregnancy, some people may think it doesn't hurt to lose a baby you haven't seen or known. Losing a pregnancy brings many emotions for mothers, fathers and other family members. It is important to know that each person may experience different feelings, to different degrees, at different times and that others care about your loss. The love and support of family and friends are very important.

You may find the following resources to be of help as you work through the emotions you are experiencing:

- The Lancaster County Library has a wealth of books on grief which have been reviewed and contributed by Share.
- Hospice of Lancaster County's PATHways Center for Grief and Loss Resource Library welcomes public visitation. Please call (717) 391-2413 for more information.
- The Internet has numerous web sites dealing with loss. Some titles to search are pregnancy loss, miscarriage, or stillbirth. The Share Website address is: [www.ShareOfLancaster.com](http://www.ShareOfLancaster.com)
- Your own clergy or the hospital chaplain may be of help to you.
- Seminars will at times deal with pregnancy loss. These usually are announced in local newspapers.