

**Share of  
Lancaster,  
Inc.**

## **Pregnancy Loss Support Group**

*As you move  
Through today,  
Into tomorrow,  
Many thoughts and  
Feelings remain.*



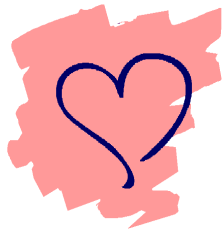
*Pregnancy & Infant Loss Support, Inc.*  
touching lives... healing hearts... giving hope...

**Share of Lancaster, Inc.**  
1576 Lititz Pike  
Lancaster, PA 17601

Phone: 717-823-2789  
Fax: 717-390-9952  
Web Site: [www.shareoflancaster.com](http://www.shareoflancaster.com)



*Pregnancy & Infant Loss Support, Inc.*  
touching lives... healing hearts... giving hope...



**SHARE**  
**Pregnancy**  
**Loss Support**  
**Group**

**Linda Harnish, RN** -As the Group Coordinator, Linda heads the meetings of the SHARE support group. Linda is an empathic and nurturing caregiver with experience as both an obstetrical nurse at Women and Babies Hospital and a Certified Bereavement Facilitator. Linda saw the need for improved perinatal grief services at her hospital and helped create and sustain the bereavement program there. She educates other health care professionals on the subject of perinatal loss and grief. She would be pleased to talk to you and can be reached at 823-2789 between 7 AM to 10 PM most days, or email [llhrnwbh@comcast.net](mailto:llhrnwbh@comcast.net).

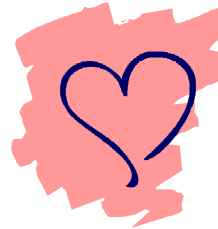
**When:**

Tuesdays, 6:30—8:00 PM

SHARE Support Group  
Monthly—1st Tuesday

**Where:**

Lancaster General Health Campus  
2100 Harrisburg Pike  
Lancaster, PA



Inside the main entrance of the Health Campus, go to the information desk and you will be directed to the NeuroCenter Conference Room on the second floor.

*The quality  
of a person's life  
cannot be judged by our  
limited understanding  
of time.*



**Share of Lancaster, Inc.**  
1576 Lititz Pike  
Lancaster, PA 17601

Phone: 717-823-2789

Fax: 717-390-9952

Web Site: [www.shareoflancaster.com](http://www.shareoflancaster.com)